



UNIVERSE[®]
LEAVES

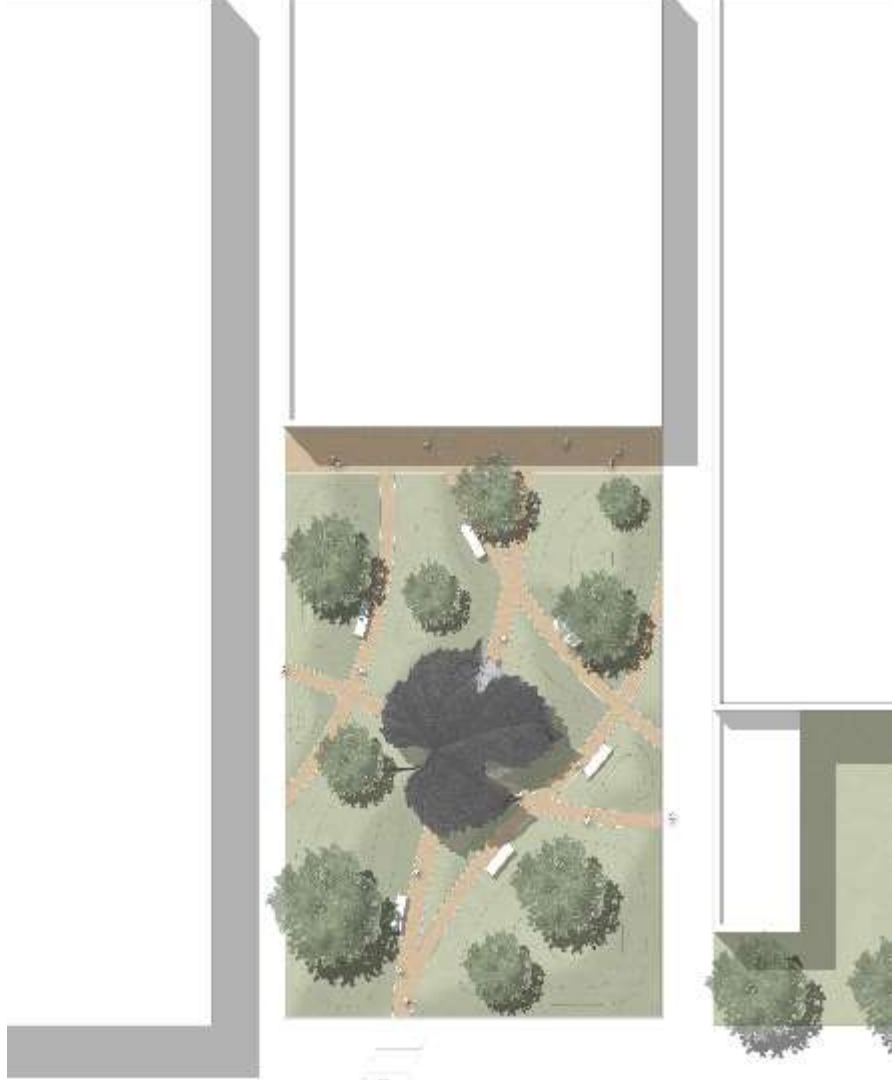
Daba nekad nav sliktāka par mākslu,
tieši tāpēc māksla atdarina dabu.

/Marks Aurēlijs/





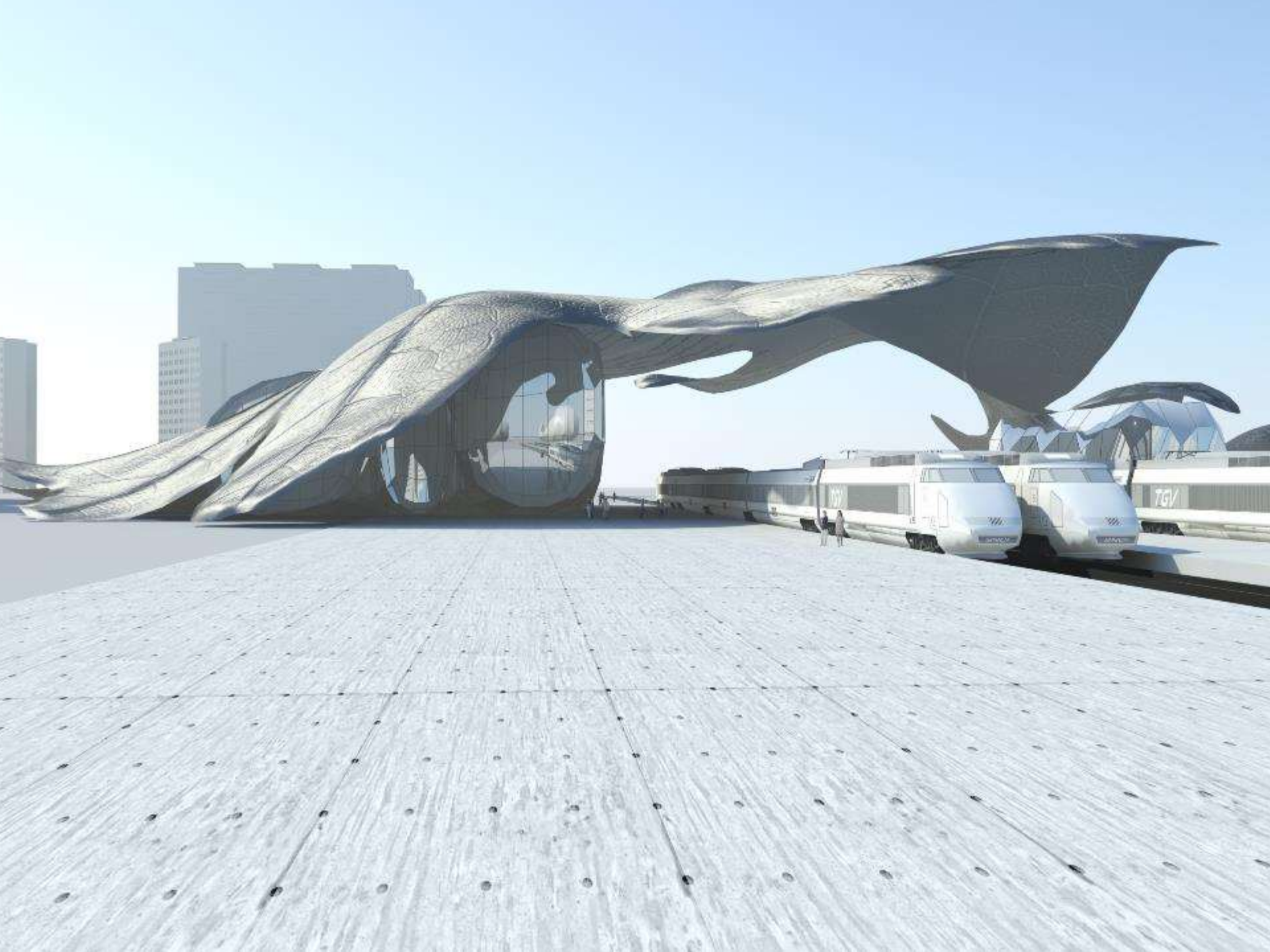






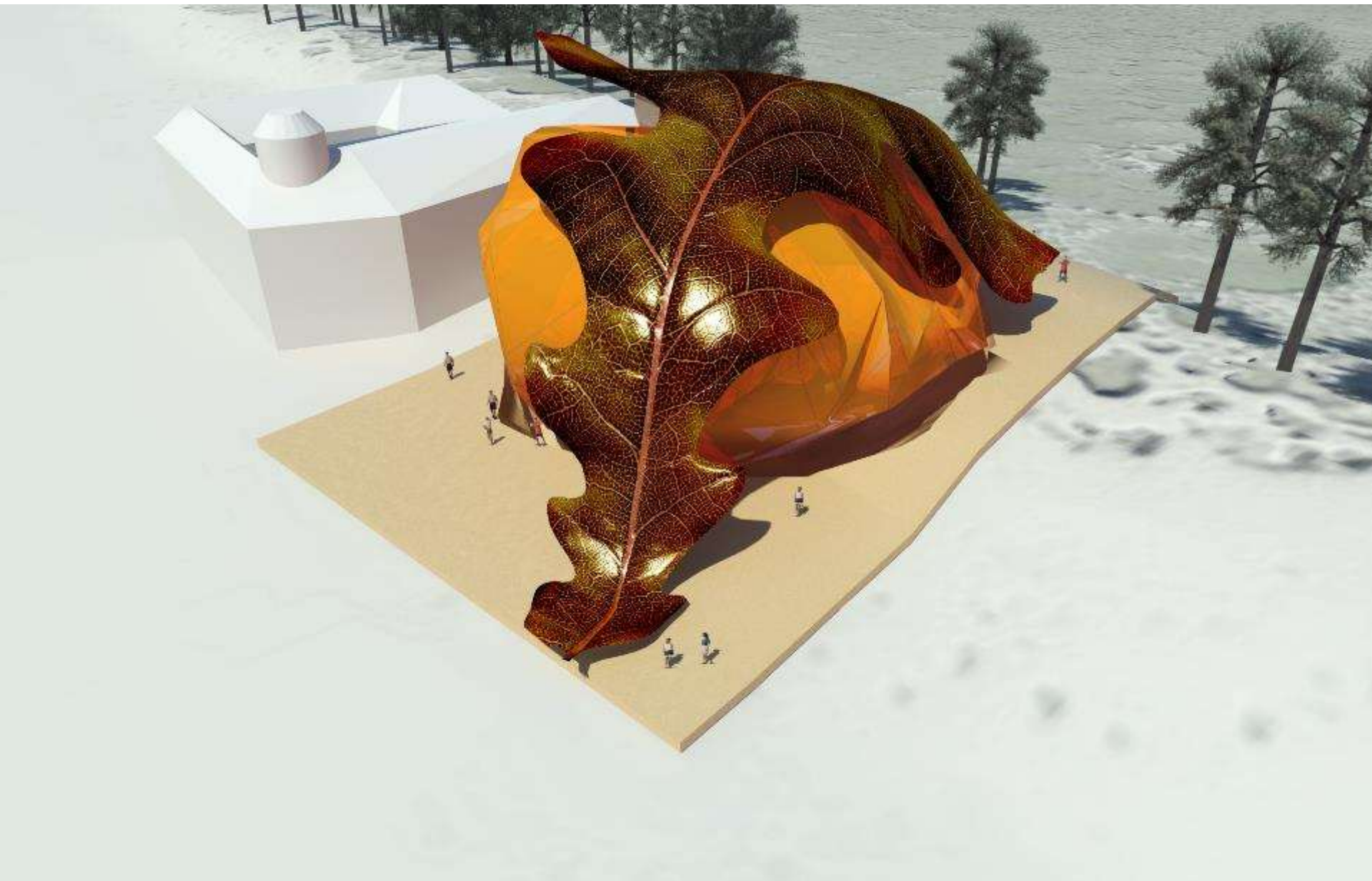






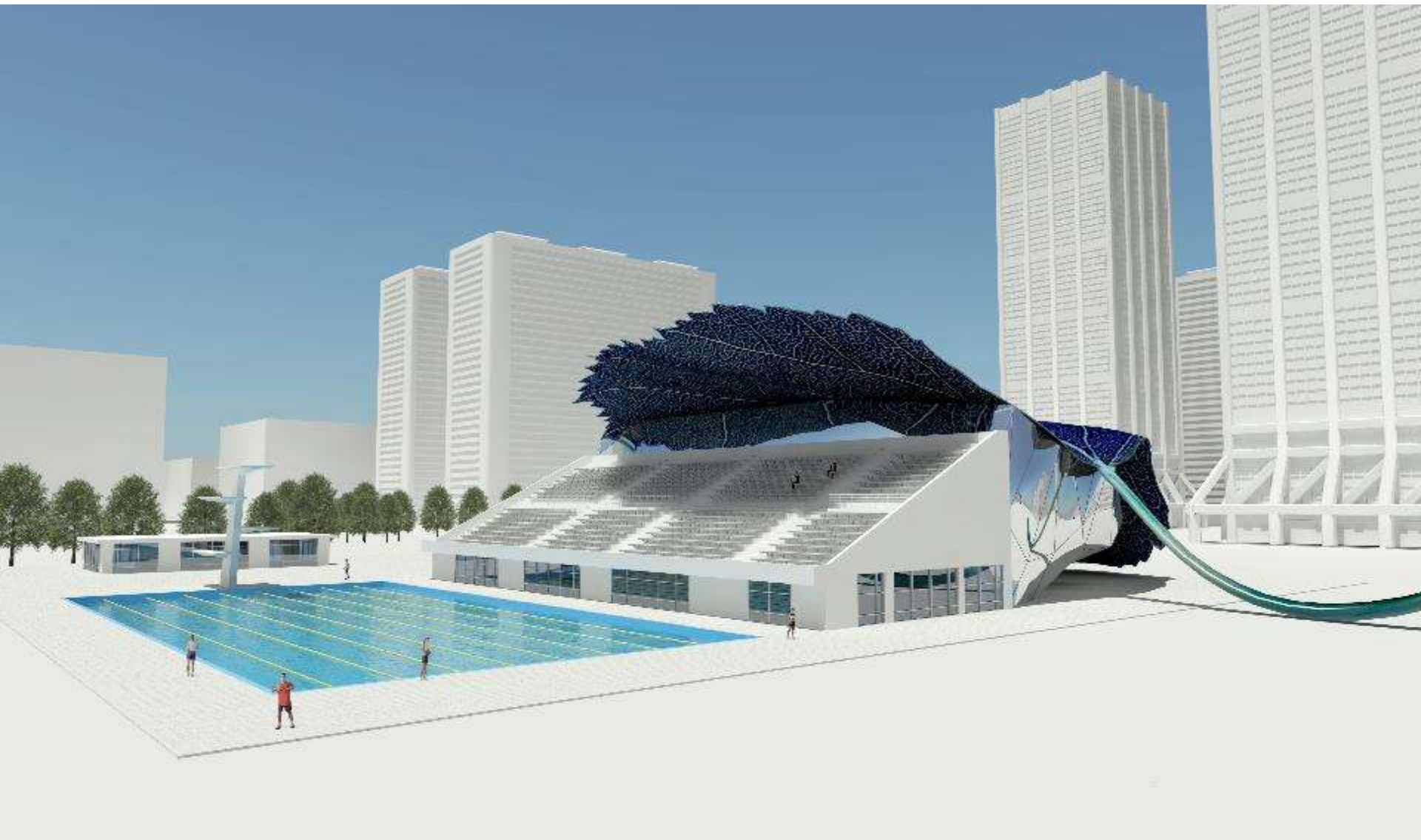






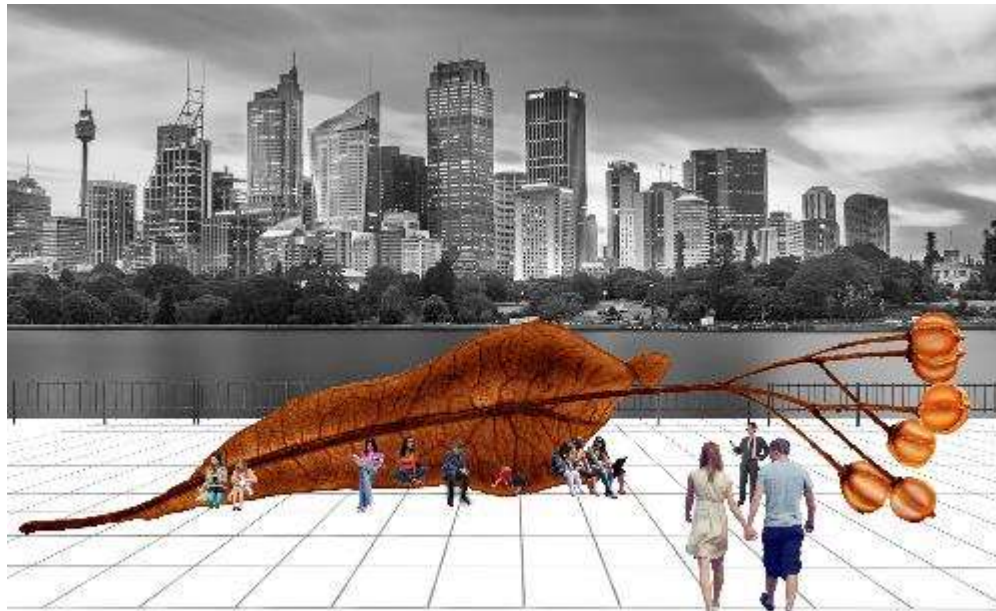




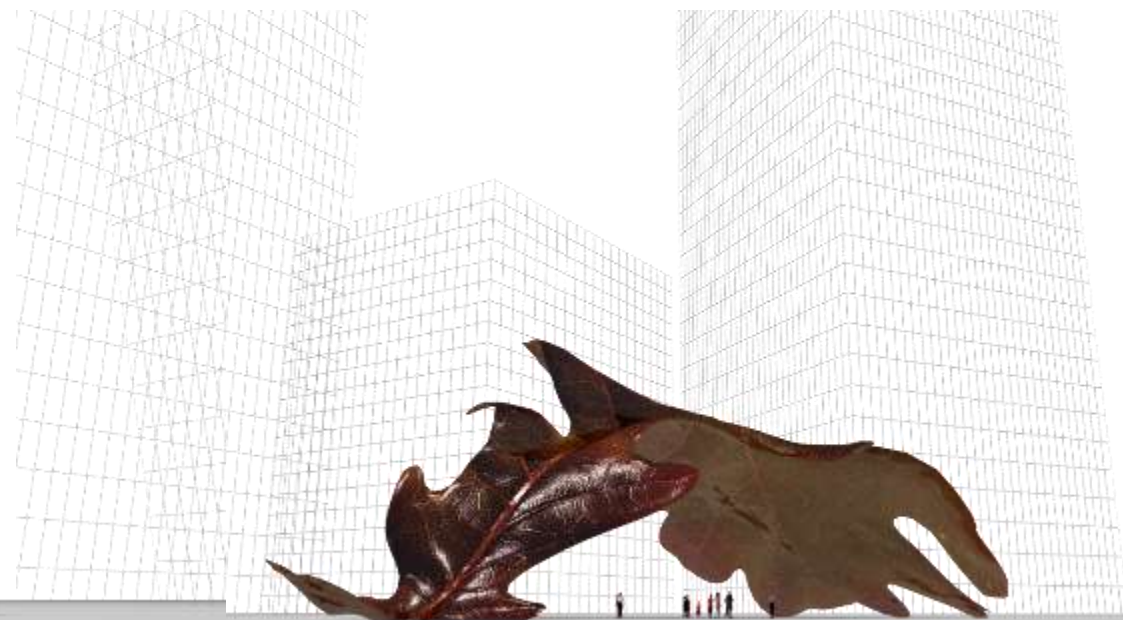
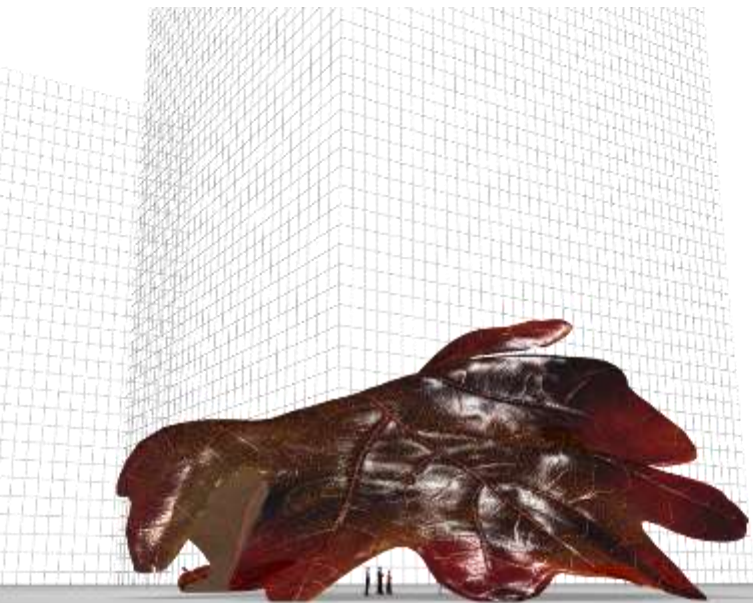


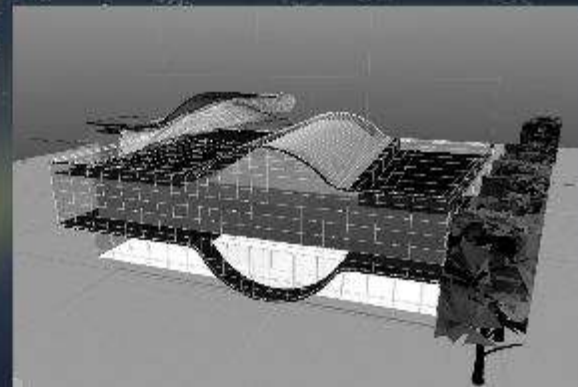
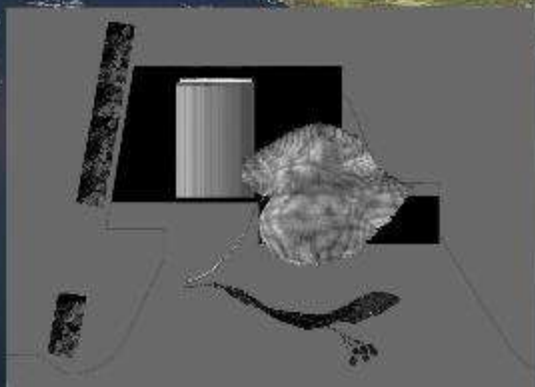
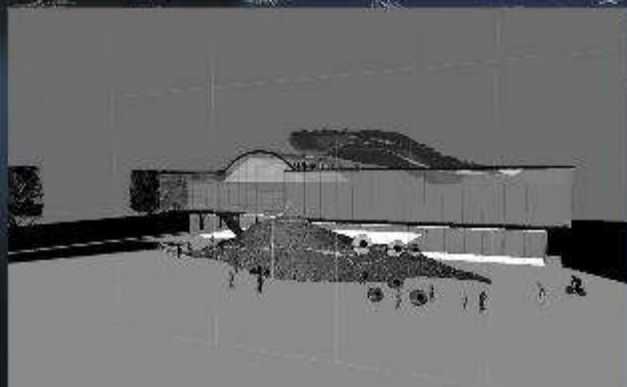


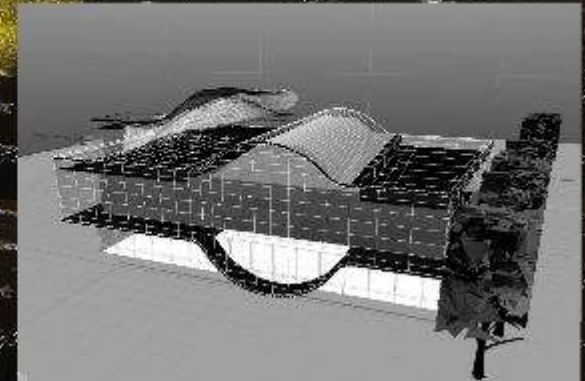
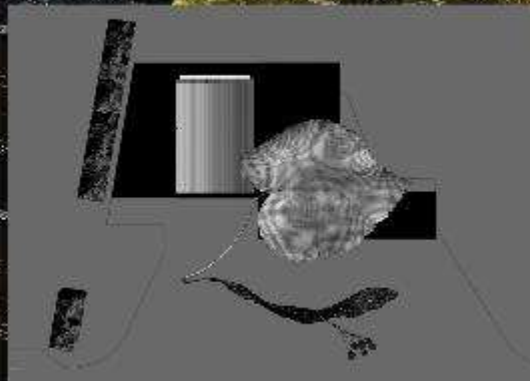
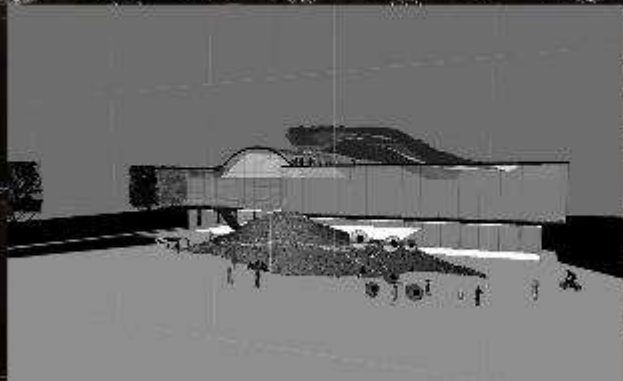


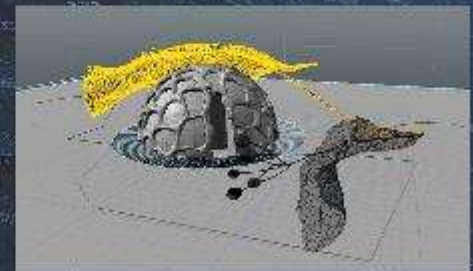
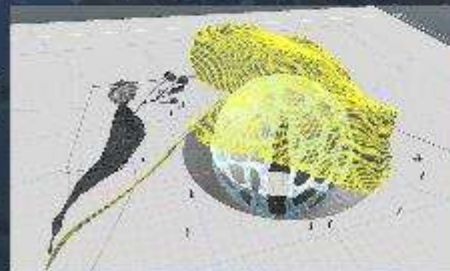
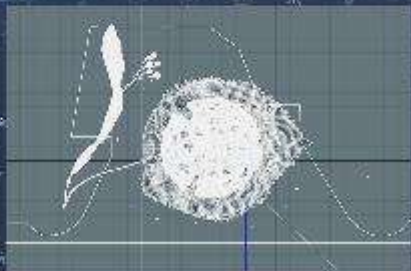
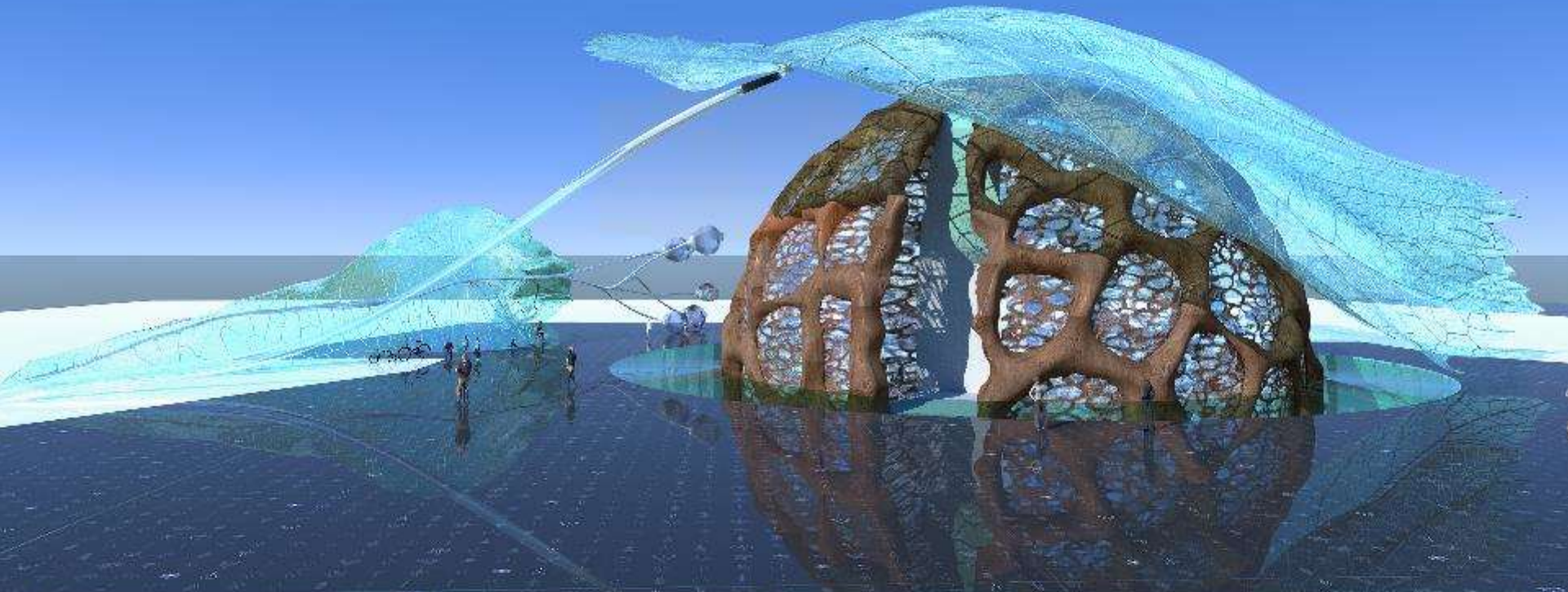


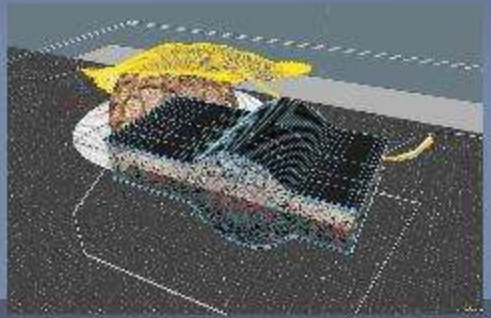
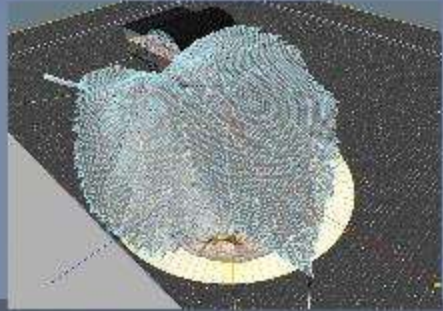
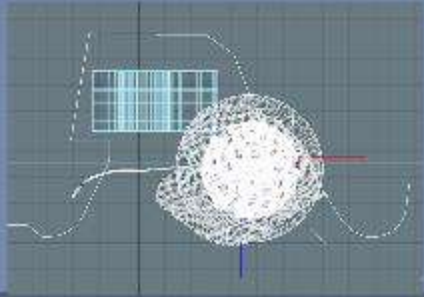
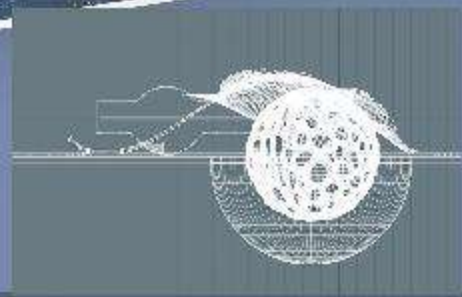
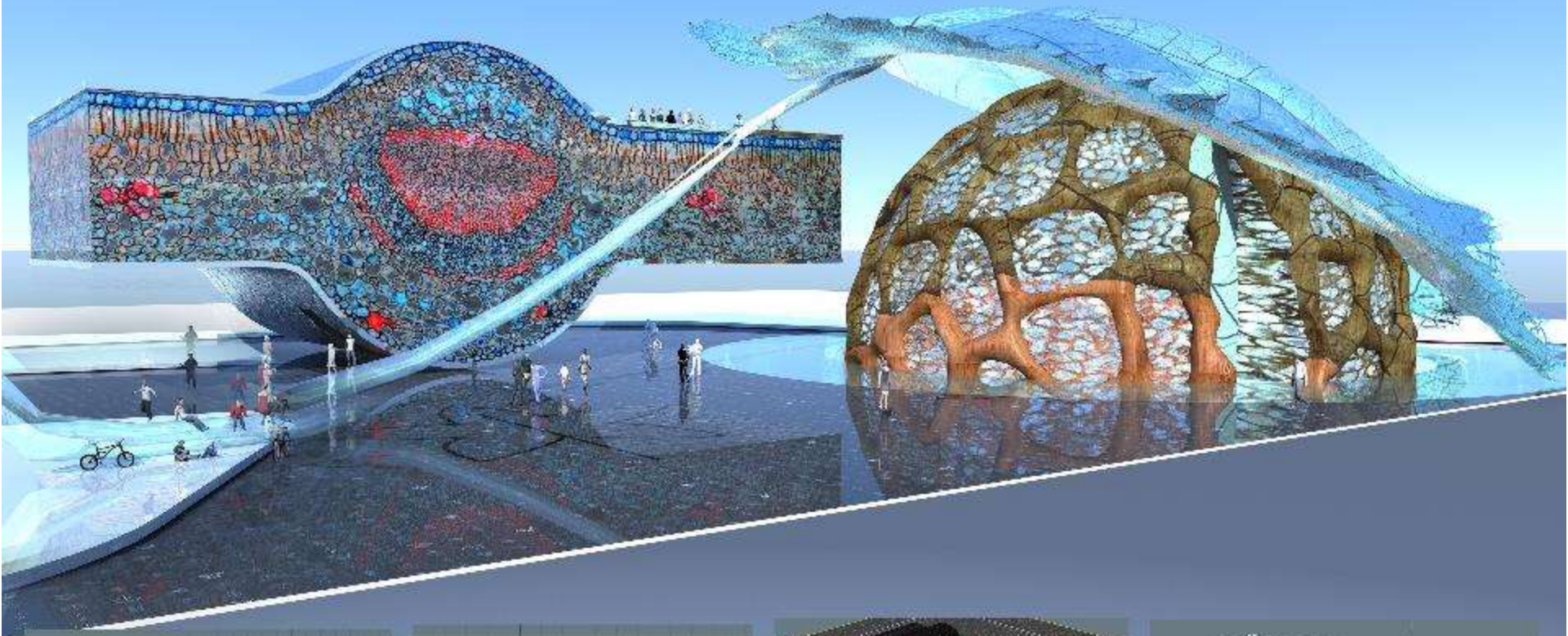




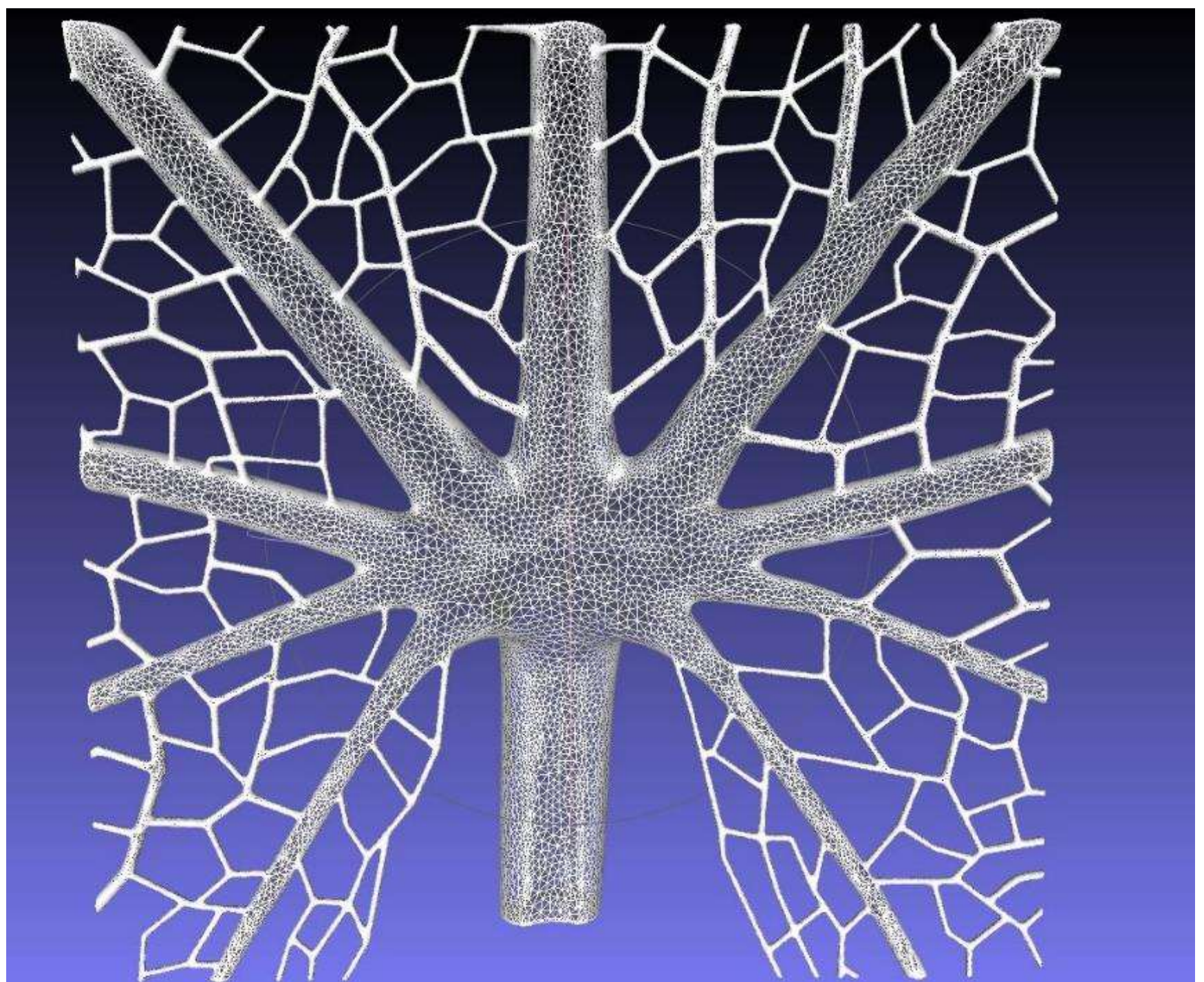


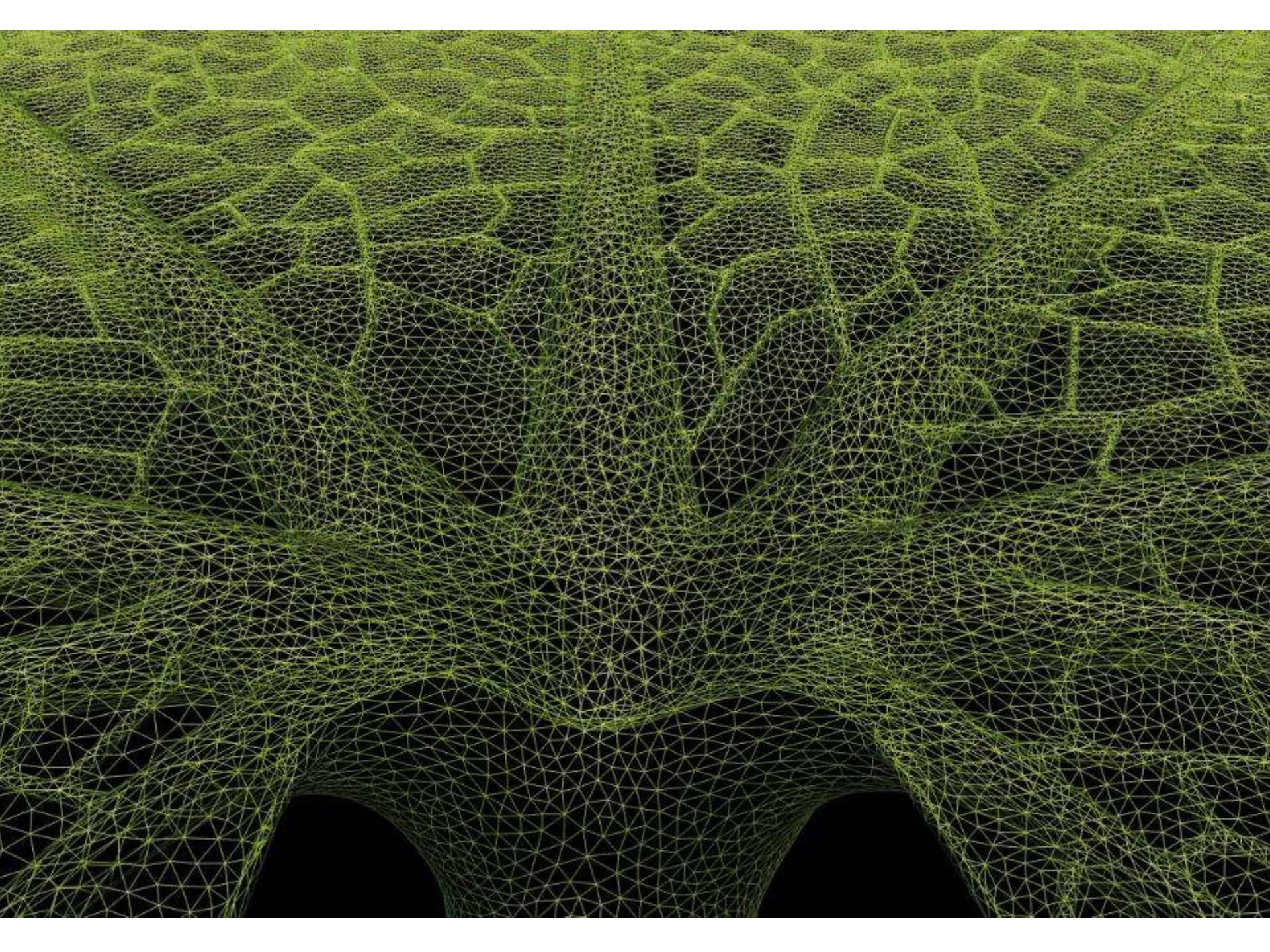




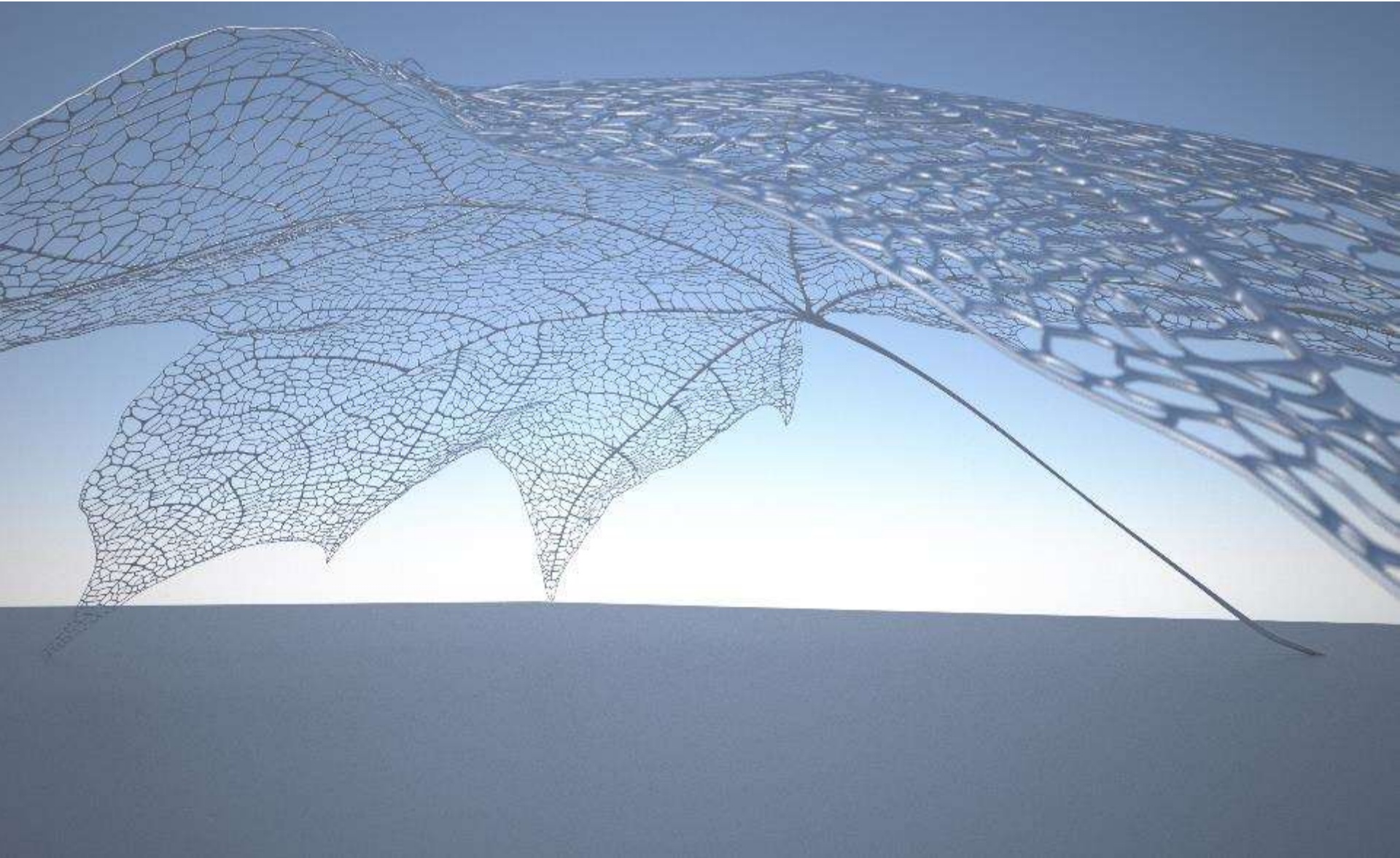




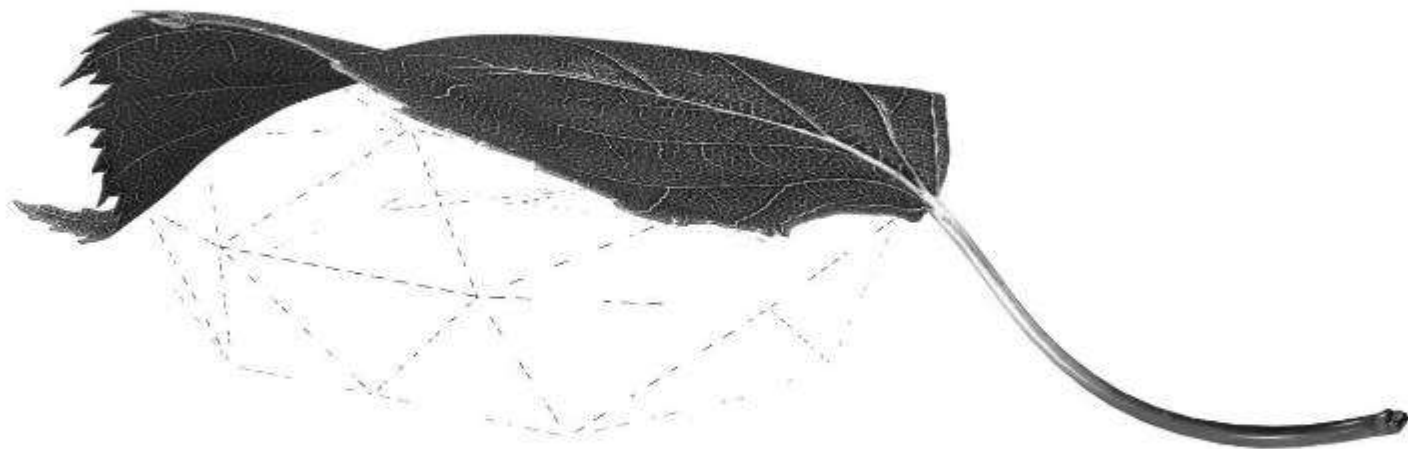


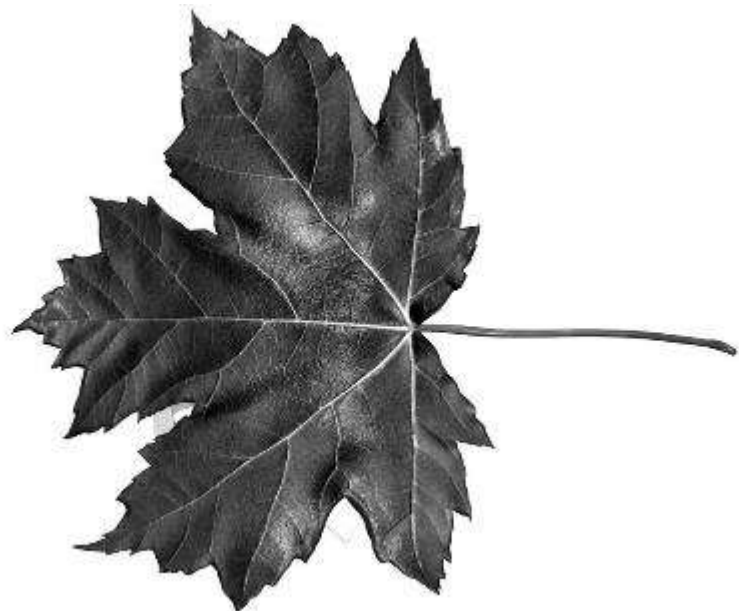


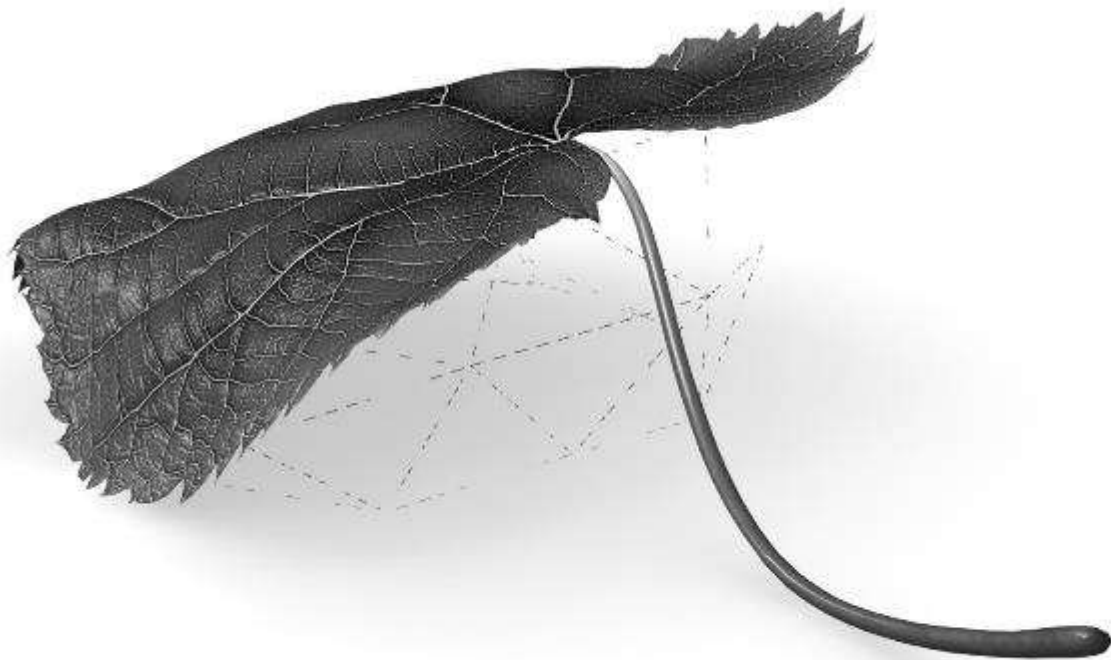


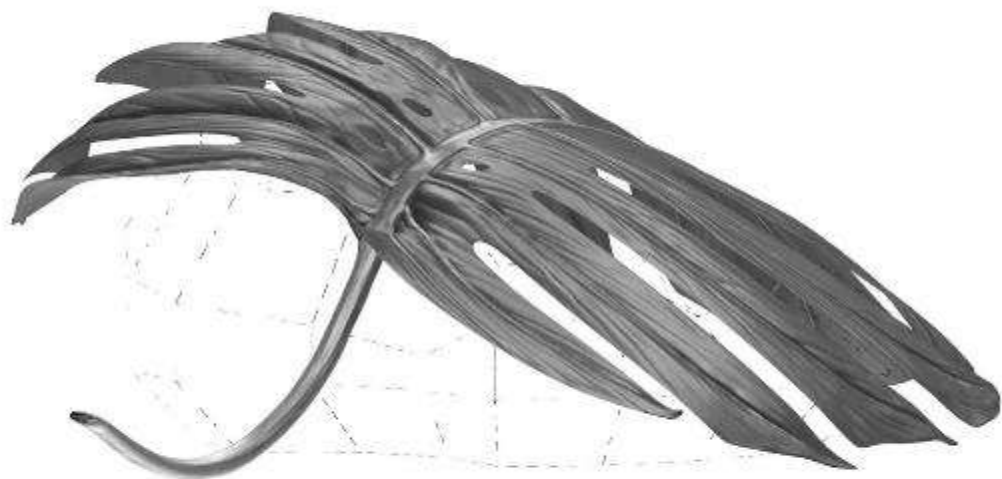
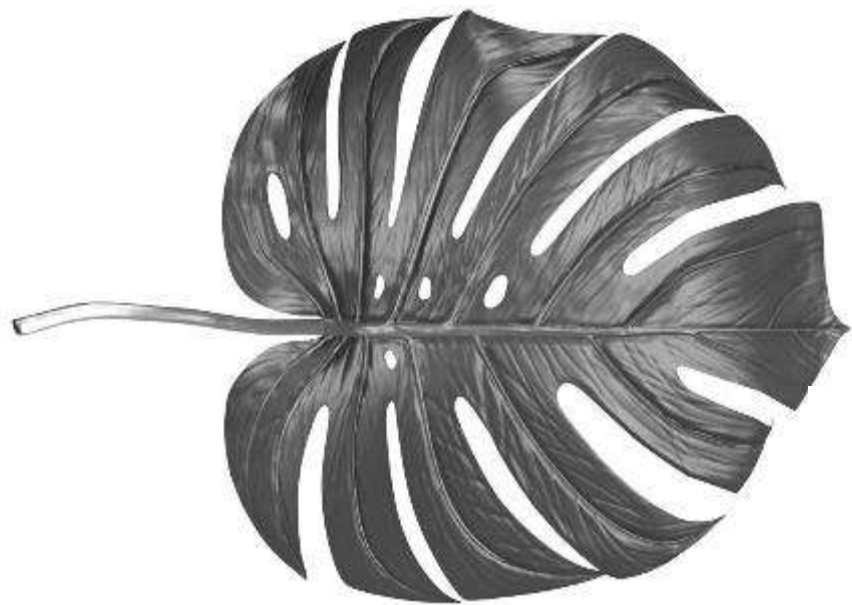


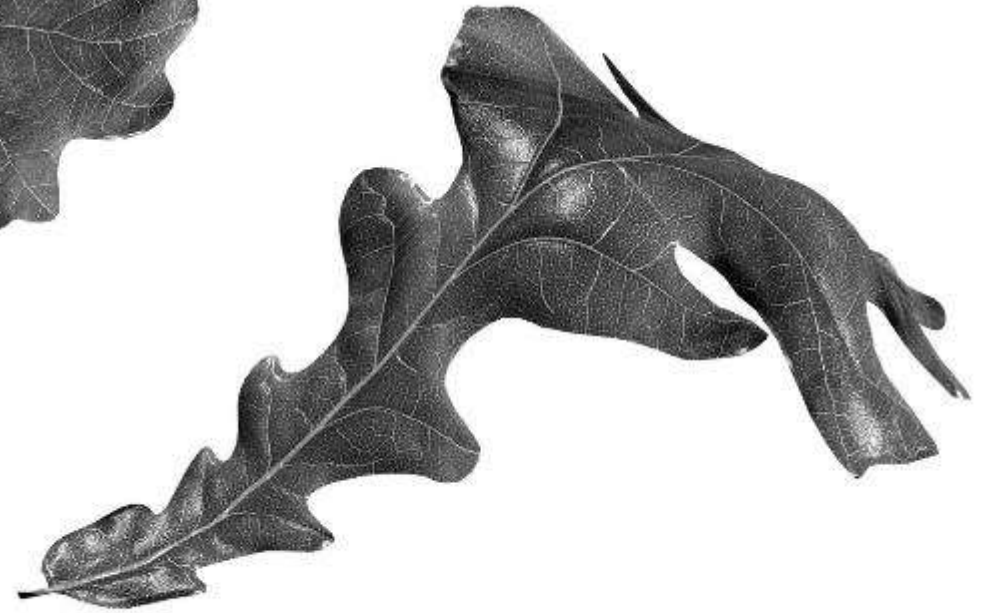


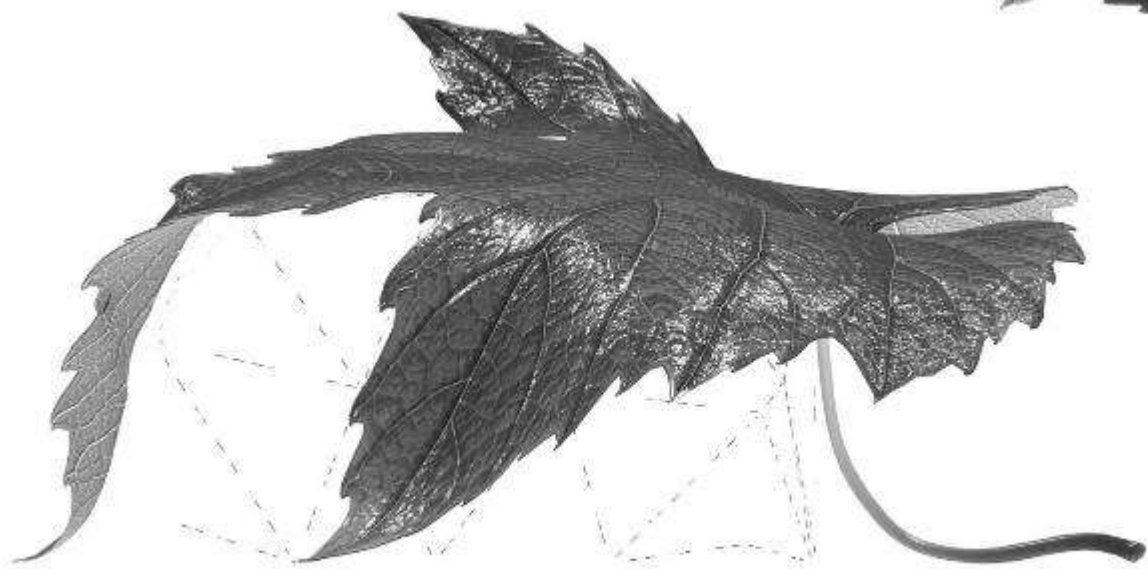














PAR KOMPĀNIJU

LAPAS

KONTAKT

PRESE

ATBALSTS

ECOLOGY

SCULPTURE

FASHION

TECHNOLOGY

DESIGN

ENGINEERING

COOPERATION

SHOP

DESIGN

BUILDING

COOPERATION

EDUCATION

IDEAS

INNOVATION

SCIENCE

PHILOSOPHY

ADVERTISEMENT

MANUFACTURING



Par kompaniju

Projekti

Lapas

Prese

Atbalsts



Arhitektūra

Dizains

Mode

Dizains

Bērnu kāpelējamā atrakcija

Ozola lapa

3D tehnoloģija

Koordinātu kompozicionāls

Formas stilis

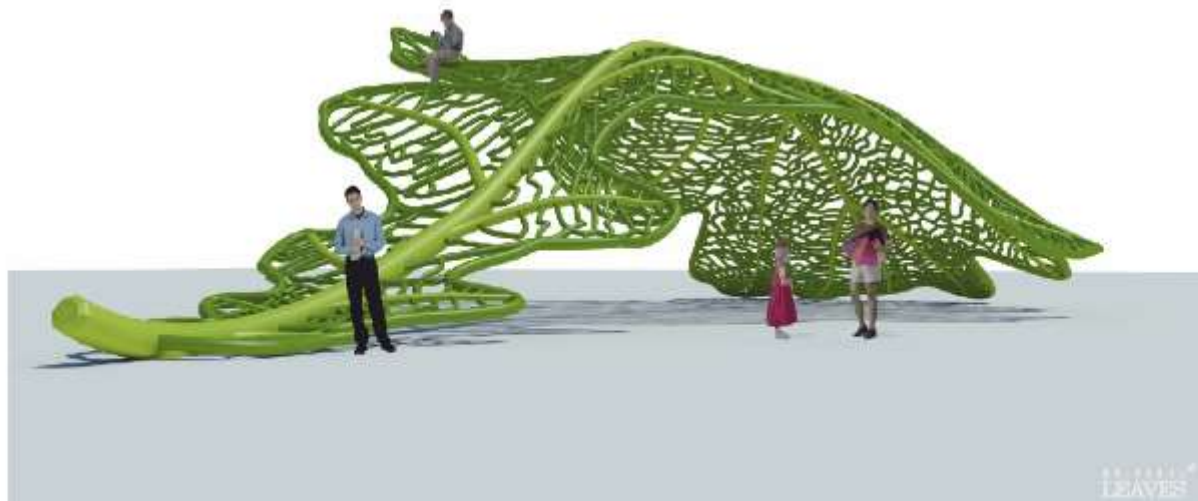
Lapas forma

Prāgums

Lapas gaita forma

В среде непереносимости и токсичной ЛУЧСЪЕВ компания Universal Leaves использует цифровой слепок при сотрудничестве с архитектором. Это позволяет дизайнерам, архитекторам, инженерам, скульпторам и т.д. создавать ЛУЧСЪЕВ в индивидуальной структуре и воплощать идеи по индивидуальным заказам, материалом также является алюминий и сталь.

Материалы, применяющиеся в этих уникальных изделиях, позволяют создавать климатическим условиям и традициям страны, экологически чистые и долговечные.



UNIVERSAL
LEAVES



Par kompaniju

Projekti

Kontakti

Prese

Atbalsts



LAPU BIBLIOTĒKA

Mūsu bibliotēkā atrodamās lapas

A B C D E F G H H I J K L M N O P Q R S T U V W X Y Z

ābeles lapa



ābolu lapa



barbasa lapa



banāna lapa



bāza lapa



[Par kompāniju](#)[Projekti](#)[Lapas](#)[Prese](#)[Atbalsts](#)[Foto](#)[Morfoloģija](#)[3D Modeļi](#)[LAPU BĪBLIOTEKA](#)

A B C D E F G H H I J K L M N O P Q R S T U V W X Y Z

Bambusa lapa

Bambusaceae

- Informācija
- Lapas forma
- Apsvaidojums
- Lapas gaisma

Bambusa lapa ir viena no visbiežāk sastopamākajām lapu formām (Bambusa lapa) un ir raksturīga tropiķu un subtropiķu klimātiem. Bambusa lapa ir raksturīga tropiķu un subtropiķu klimātiem. Bambusa lapa ir raksturīga tropiķu un subtropiķu klimātiem. Bambusa lapa ir raksturīga tropiķu un subtropiķu klimātiem.

- subtribe Mosoosiniinae**
Diplazocorym, Dactyloctenium, Dioclea, Hedyotis, Marantaceae, Oxidaria,
Panicoidium, Schizanthus, Sphaeranthus, Themistocleum
- subtribe Hedyotisinae**
Dactyloctenium, Dioclea, Hedyotis, Marantaceae, Oxidaria, Sphaeranthus, Themistocleum

- subtribe Marantaceae**
Adiantum, Cissampelos, Dioclea, Hedyotis, Marantaceae, Oxidaria, Sphaeranthus, Themistocleum
- subtribe Marantaceae**
Adiantum, Cissampelos, Dioclea, Hedyotis, Marantaceae, Oxidaria, Sphaeranthus, Themistocleum
- subtribe Marantaceae**
Adiantum, Cissampelos, Dioclea, Hedyotis, Marantaceae, Oxidaria, Sphaeranthus, Themistocleum
- subtribe Marantaceae**
Adiantum, Cissampelos, Dioclea, Hedyotis, Marantaceae, Oxidaria, Sphaeranthus, Themistocleum



Iegādāties Foto





Par kompaniju

Projekti

Lapas

Prese

Atbalsts



Foto

Morfologija

3D Modeļi

LAPU MORFOLOGIJA

Vienkāršas lapas

lapas parrāda
vai gala īpatnības

Izgrieztas lapas

Sašķeltas lapas

Īrātkūņve

Apaša



Ieņeļa



Iegarena



Iēiptiska



Iancetiska



Iineara





Per kompāniju

Projekti

Lapas

Prese

Atbalsts



Foto

Morfoloģija

MORFOLOĢIJA

Vienkāršas lapas

lapas pamata
vai gals izvirzības

Izniektas lapas

Saliktas lapas

Dzīslējums

plūksnaini cilveidīgs

plūksnaini mallejs

stariņi lūveidīgs

stariņi cilveidīgs

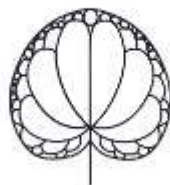
stariņi mallejs

stariņi rīkļots

stariņi mallejs



stariņi cilveidīgs



stariņi rīkļots



stariņi cilveidīgs



plūksnaini cilveidīgs





Par kompāniju

Projekti

Lapas

Prese

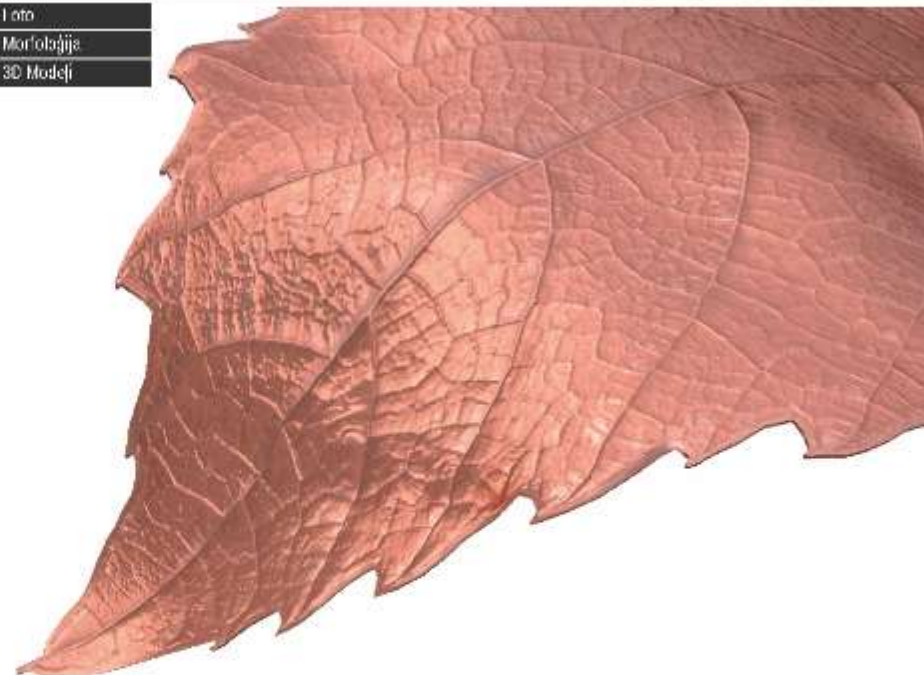
Atbalsts



Materiāli

Lapas būvniecībā iespējamie materiāli

Varš





UNIVERSE[®]
LEAVES